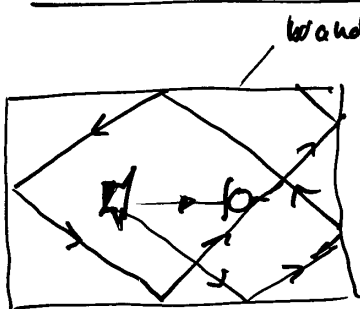
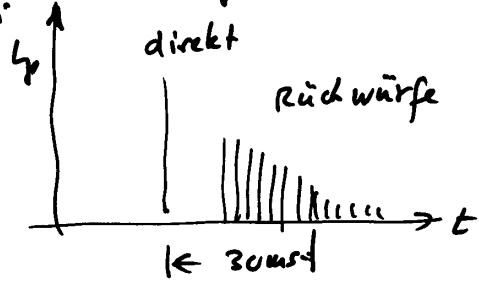


## Raumakustik

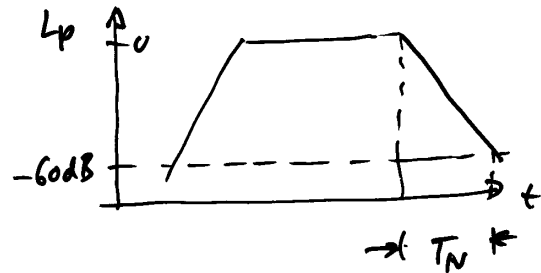
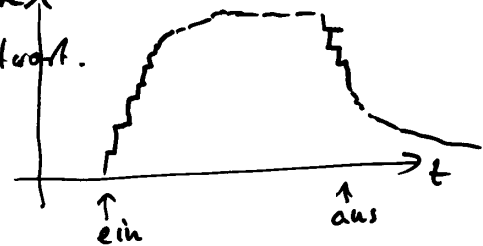


wandfl.  $A_i$   
Absorptionsgrad  $\alpha_i$

Impulsantwort  
 direkt  
 Rückwürfe



Energiedichte  
 Sprungantwort.



Sabine'sche Formel

$$T_N = 0,163 \frac{\text{s}}{\text{m}} \cdot \frac{V}{\bar{\alpha} A}$$

$$\bar{\alpha} = \frac{1}{A} \sum_i \alpha_i A_i$$

$T_N$  (500... 1000 Hz)

Wohnzimmer Sprache Konzert Orgel

0,5      1,0      1,7-2      2,5 sec

Schallenergie-dichte, Schallintensität  
(einer Punkt-schallg.)

